

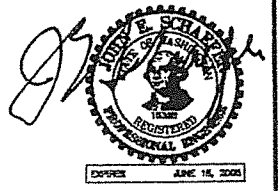
NOTES:

- 1) PROPERTY LINE AND CONTOUR INFORMATION FROM PLAN BY ROB HARBOUR PLANNING AND DEVELOPMENT SERVICES, March 21, 1997 (Preliminary Approval) REVISED 7/5/03 TO CONFORM TO PLAT BY TRI-COUNTY LAND SURVEYING CO., LYNWOOD, WA FOR PRD 169/96 SPR 405/96 SEE SURVEY PLAT FOR LOCATION OF SEWER EASEMENTS.
- 2) TEST HOLE INFORMATION & LEACH FIELD LAYOUT BY DAVID M. CRIMMINS, COUPEVILLE, WA.
- 3) SEE SHEET 2 FOR LEGEND
- 4) MINIMUM SPACE BETWEEN PARALLEL SEWER & WATER LINES IS 10'; MINIMUM VERT. CLEARANCE AT CROSSINGS, 18' (SEWER LINES BELOW WATER MAINS)
- 5) ALL SEWERS HAVE DUCTILE IRON SLEEVES AT WATER CROSSINGS, EXTENDING 10' EACH SIDE OF WATER MAIN
- 6) INDIVIDUAL LEACH AREAS TO BE SIZED AND LOCATED AS SHOWN ON SURVEY PLAT. ORIENT LATERALS PARALLEL TO ACTUAL CONTOUR AT EACH SITE. INSTALL AT TIME OF HOUSE CONSTRUCTION.
- 7) EASEMENTS FOR PIPELINES TYPICALLY 15' WIDE, PIPE(S) CENTERED IN EASEMENTS UNLESS OTHERWISE SHOWN.
- 8) GRAVITY LINES SHALL BE LAID ON A CONTINUOUS DOWN GRADIENT FROM END TO END. PUMPED LINES SHALL HAVE AIR/VACUUM RELEASE VALVES PER DETAIL AT ALL CRESTS.
- 9) DRAIN BED INSTALLER SHALL LOCATE AS-BUILT CENTERLINES OF PIPE RUNS, A/V VALVE LOCATIONS, AND CORNERS OF INSTALLATION WITH RELATION TO DRAINFIELD CORNERS SHOWN ON PRD PLAT FOR PREPARATION OF RECORD DRAWINGS.
- 10) (AS BUILT NOTE) TRANSMISSION PIPING INSTALLATION VERIFIED, INSPECTED, AND SUCCESSFULLY PRESSURE TESTED AS FOLLOWS:
 LOTS 4, 5, 6, 7, 8, 15 & 16 ON APR. 28, 2000
 LOTS 9, 10, & 13 ON JULY 27, 2000

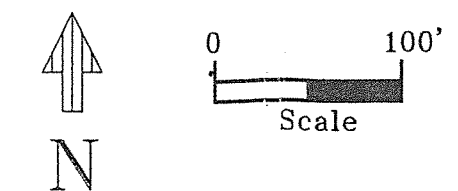
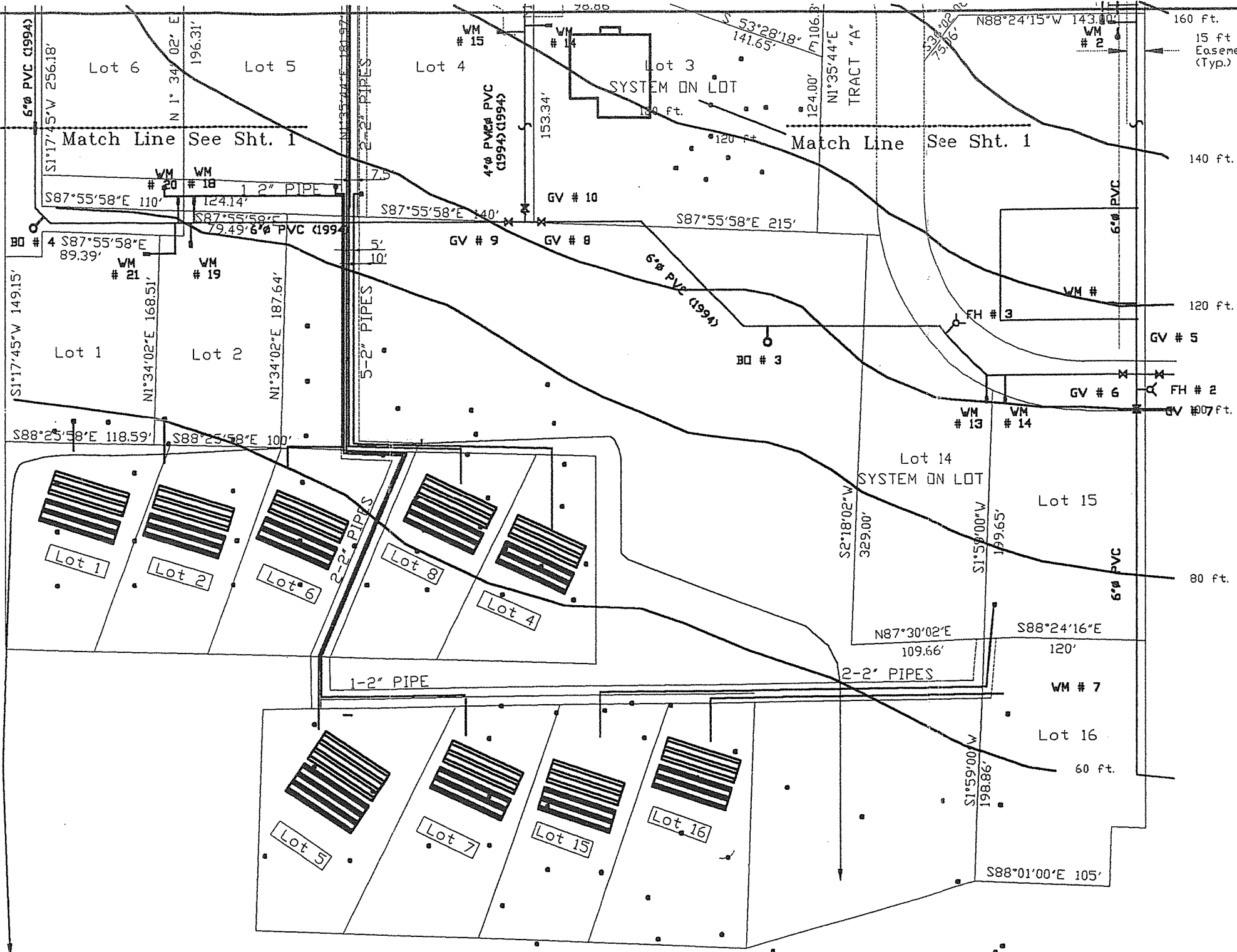
SCHAEFER & BRATTON, ENGINEERS
 P. O. Box 607
 Coupeville, Washington 98239
 Job 331 Nov. 1999 Rev. 7/5/03

INDIVIDUAL OFF-SITE SEWAGE TRANSMISSION
 LINE UTILITY PLAN
 AS-BUILT DRAWING 7/5/03

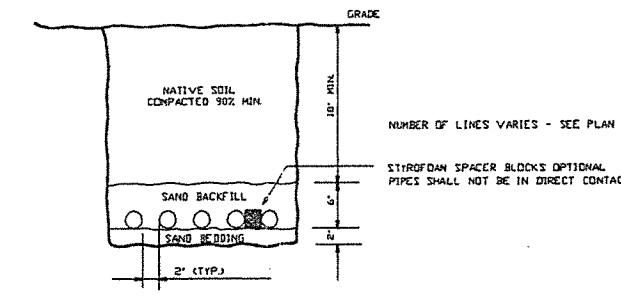
CHELEEK PRD 169/96
 SPR 405/96



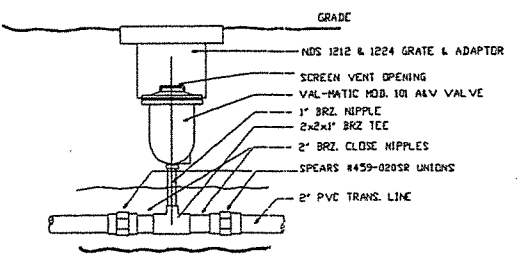
2/28/07



- LEGEND:**
- NEW 2" SCH 40 DR CL 200 PVC PRESSURE OR GRAVITY SEWER
 - SYSTEM CONNECTION AT LOT (PIPE TERMINATES W/ LOOSE CAP & PAINTED WOOD STAKE MARKED "SEWER CONNECTION")
 - LEACH SYSTEM - TO BE DESIGNED BY INSTALLER AS APPROPRIATE FOR LOADING & SOIL CONDITION AT EACH LOCATION. SOLID PORTION SIGNIFIES 100% RESERVE AREA.
 - SOIL SAMPLING LOCATION



DETAIL - 2" TRANSMISSION PIPE INSTALLATION



DETAIL - AIR/VACUUM VALVE INSTALLATION

WITNESSED SATISFACTORY PRESSURE TEST ON ALL 2" TRANSMISSION PIPES:
 FOR LOTS 4,5,6,7,8,15,&16 ON 4/28/00
 FOR LOTS 9,10,&13 ON 7/27/00

John E. Schaefer
 JOHN E. SCHAEFER, PE.



SCHAEFER & BRATTON, ENGINEERS
 P. O. Box 607
 Coupeville, Washington 98239
 Job 331 Nov. 1999 Rev. 7/5/03
 INDIVIDUAL OFF-SITE SEWAGE TRANSMISSION
 LINE UTILITY PLAN
 AS-BUILT DRAWING 7/5/03
 CHELEEK PRD 169/96
 SPR 405/96
 Sht. 29 of 29

2/28/07