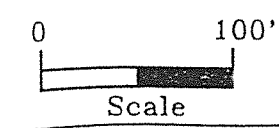


**NOTES:**

- 1) PROPERTY LINE INFORMATION FROM PLAN PREPARED BY ROB HARBOUR PLANNING AND DEVELOPMENT SERVICES, March 21, 1997 (Preliminary Approval)
- 2) ELEVATION CONTOURS FROM PLAN PREPARED BY ROB HARBOUR PLANNING AND DEVELOPMENT SERVICES, March 21, 1997 (Preliminary Approval)
- 3) SEE SHEET 2 FOR LEGEND
- 4) VALVE, HYDRANT, AND OTHER IDENTIFICATION NUMBERS ARE PROVIDED FOR REFERENCE IN SYSTEM'S M. & D. MANUAL THE NUMBERS WERE ASSIGNED BY THE SYSTEM OPERATOR.
- 5) THESE PLANS ARE FOR SYSTEM OPERATION ONLY, FOR CLARITY, THE LOCATION OF MAINS AND APPURTENANCES ARE NOT SHOWN TO SCALE.
- 6) MAINS DENOTED BY DATE (1994) ARE AWWA C-900 PVC PIPE, CL 160 PSI; MAINS WITHOUT DATE OF INSTALLATION NOTED ARE AN UNKNOWN CLASS OF PVC.

LOT SHAPES WERE ALTERED IN FINAL PLAT



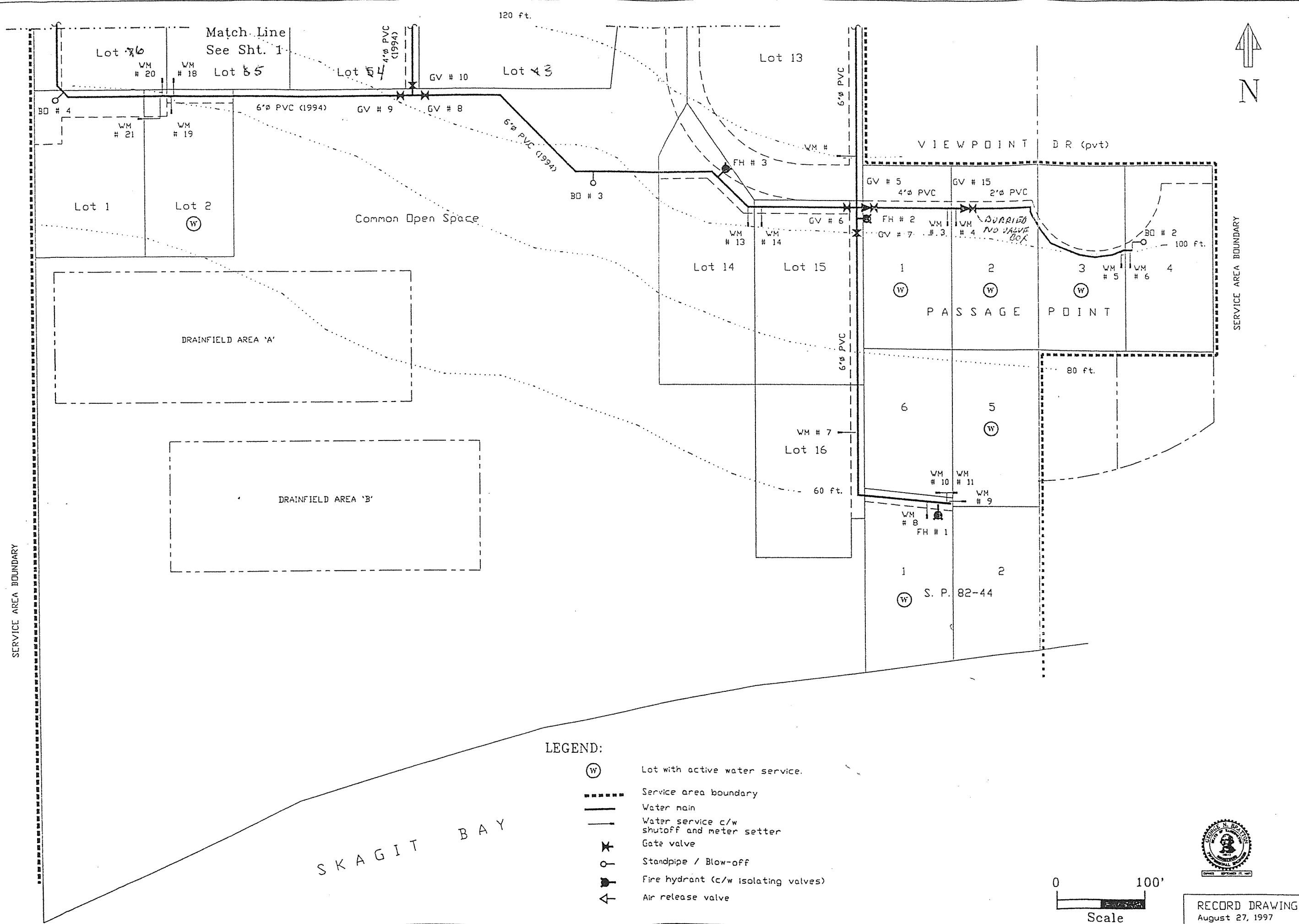
RECORD DRAWING  
February 18, 1997

SCHAEFER & BRATTON, ENGINEERS  
 P. O. Box 607  
 Coupeville, Washington 98239  
 Job 161  
 Oct. 1992

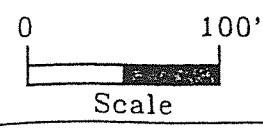
WATER DISTRIBUTION SYSTEM  
 COMPREHENSIVE MAP

POLNELL LANDING WATER ASSOC.  
 c/o Harbour Planning & Dev. Serv.  
 P. O. Box 56  
 Coupeville, Washington 98239

Sht. 1 of 4



- LEGEND:**
- (W) Lot with active water service.
  - Service area boundary
  - Water main
  - - - Water service c/w shutoff and meter setter
  - ✕ Gate valve
  - Standpipe / Blow-off
  - ⊕ Fire hydrant (c/w isolating valves)
  - ⬆ Air release valve



RECORD DRAWING  
August 27, 1997

SCHAEFER & BRATTON, ENGINEERS  
P. O. Box 607  
Coupeville, Washington 98239  
Job 161 Oct. 1992

WATER DISTRIBUTION SYSTEM  
COMPREHENSIVE MAP

POLNELL LANDING WATER ASSOC.  
c/o Harbour Planning & Dev. Serv.  
P. O. Box 56  
Coupeville, Washington 98239