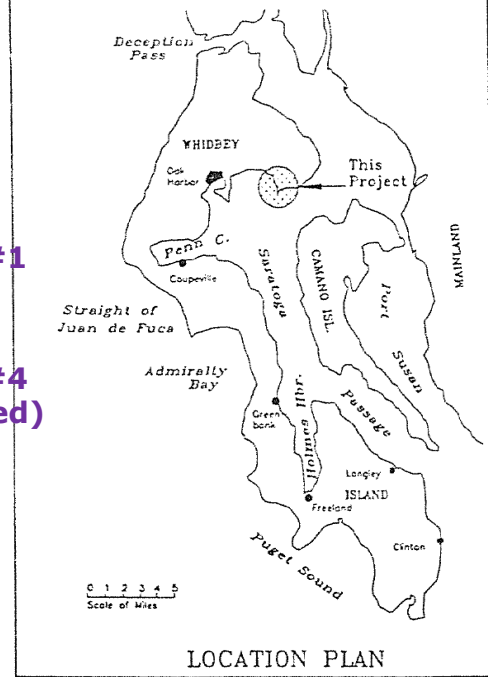
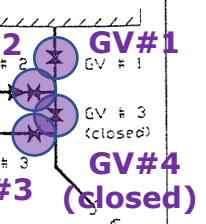
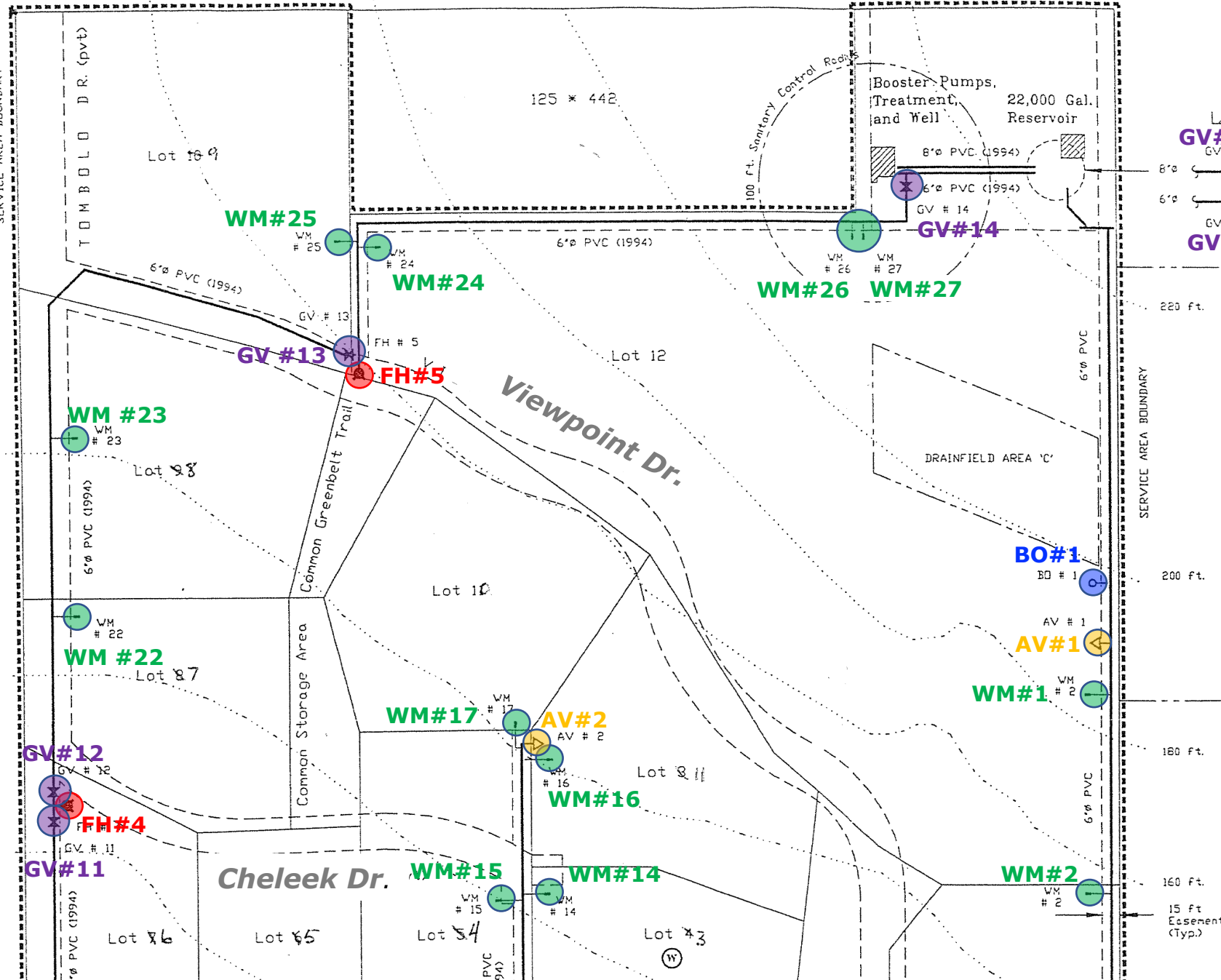


Polnell Road



SCHAEFER & BRATTON, ENGINEERS
 P. O. Box 607
 Coupeville, Washington 98239
 Job 161 Oct. 1992

Tombolo Drive



220 ft. Reservoir Valving

200 ft. SERVICE AREA BOUNDARY

180 ft. SERVICE AREA BOUNDARY

160 ft. SERVICE AREA BOUNDARY

15 ft Easement (Typ.)

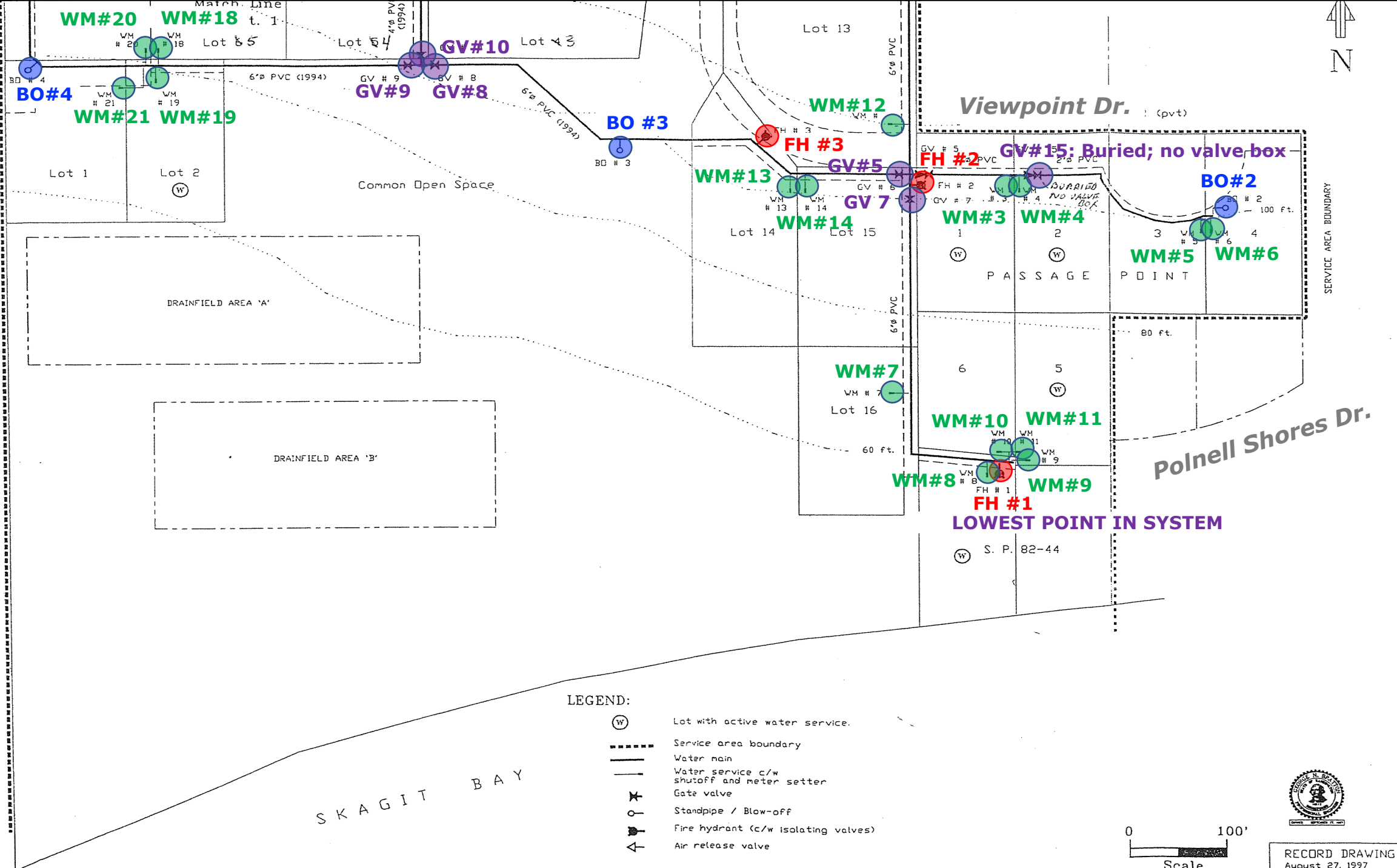
NOTES:

- 1) PROPERTY LINE INFORMATION FROM PLAN PREPARED BY ROB HARBOUR PLANNING AND DEVELOPMENT SERVICES, March 21, 1997 (Preliminary Approval)
- 2) ELEVATION CONTOURS FROM PLAN PREPARED BY ROB HARBOUR PLANNING AND DEVELOPMENT SERVICES, March 21, 1997 (Preliminary Approval)
- 3) SEE SHEET 2 FOR LEGEND
- 4) VALVE, HYDRANT, AND OTHER IDENTIFICATION NUMBERS ARE PROVIDED FOR REFERENCE IN SYSTEM'S M. & D. MANUAL THE NUMBERS WERE ASSIGNED BY THE SYSTEM OPERATOR.
- 5) THESE PLANS ARE FOR SYSTEM OPERATION ONLY, FOR CLARITY, THE LOCATION OF MAINS AND APPURTENANCES ARE NOT SHOWN TO SCALE.
- 6) MAINS DENOTED BY DATE (1994) ARE AWWA C-900 PVC PIPE, CL 150 PSI; MAINS WITHOUT DATE OF INSTALLATION NOTED ARE AN UNKNOWN CLASS OF PVC.

WATER DISTRIBUTION SYSTEM
 COMPREHENSIVE MAP

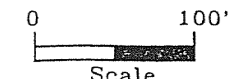
ING WATER ASSOC.
 Planning & Dev. Serv.
 . Box 56
 Washington 98239

SERVICE AREA BOUNDARY



LEGEND:

- Lot with active water service.
- Service area boundary
- Water main
- Water service c/w shutoff and meter setter
- Gate valve
- Standpipe / Blow-off
- Fire hydrant (c/w isolating valves)
- Air release valve



RECORD DRAWING
August 27, 1997

SCHAEFER & BRATTON, ENGINEER
P. O. Box 607
Coupeville, Washington 98239
Job 161 Oct. 1992

WATER DISTRIBUTION SYSTEM
COMPREHENSIVE MAP

POLNELL LANDING WATER ASSOC.
c/o Harbour Planning & Dev. Serv.
P. O. Box 56
Coupeville, Washington 98239